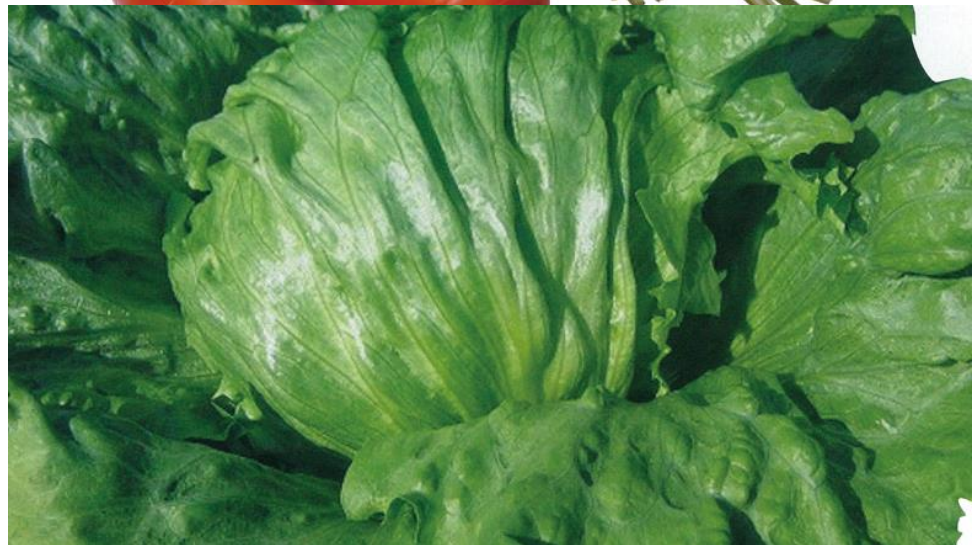


Vegetable seed  
CATALOGUE

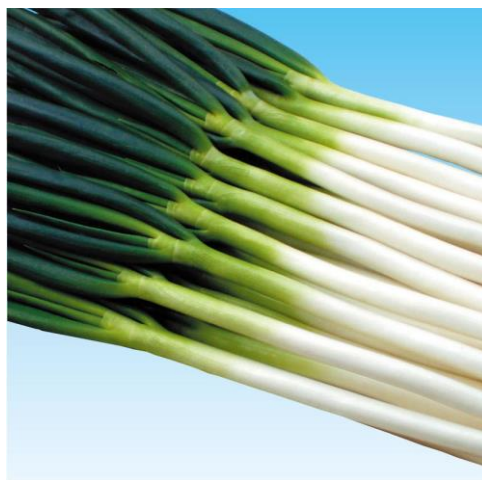


The Yokohama Nursery Co.,Ltd.

**We, all members in Global Sales of The Yokohama Nursery Co., Ltd. will do our best to develop, produce and deliver our bred vegetable seeds which respond to requests from customers in the world.**

## The Message from Global Sales

Our net melon, bunching onion, carrot and lettuce varieties have been widely cultivated in each main producing area in Japan after years of strenuous efforts. We have broadened our perspective globally and made every effort to meet our customers' demands and expectations in the world in nearly a decade, breeding more suitable varieties for overseas cultivation environment and market and attending international seed business congresses. Today, our vegetables seeds including carrot, bunching onion, and melon etc. are delivered to customers from more than twenty countries in Asia, Europe, and South America. Although the demands vary widely between customers, it is our pleasure as a breeding company that we meet our customers' various demands and expectations faithfully to gain our customers' trust. We have highly-qualified staff capable of communicating in English, Spanish, Portuguese and Chinese, so we are always looking forward to hearing about your demands.



Seed will not perform its 100% purity upon essential factors. Result is dependent upon cultivation conditions, weather and environmental factors. Yokohama Nursery warrants to the extent of the purchase price only, that these seeds conform the description. Yokohama Nursery does not warrant that any seed if the seed is reprocessed. Seed must be stored in cool and low humidity conditions. Seed possibly be treated with a chemical treatment. Do not use for feed or food purposes. Seed shall not be used for research(including but not limited to agronomic comparisons and yield testing), breeding, or molecular or genetic characterization.

**Strengths & Advantages**✓ *Root vigor* ✓ *Cold tolerance*

# XXC-1

MATURITY : MediumCULTIVATION SEASON : WinterSHAPE : Semi CylindricalLENGTH : 17 to 18 cm (7 in.)PLANT VIGOR : StrongEXTERNAL COLOR : Dark Orange**Cultivation tips**

- ✓ *Do not overdo Nitrogen during the beginning of growing stage to avoid excess foliage growth.*
- ✓ *Reduce 20 to 30% amount of fertilizer for the field when plants become too vigorous.*
- ✓ *Use of organic fertilizer for better result and avoid stains on the skin.*

**Strengths & Advantages**✓ *Early maturity* ✓ *High yield*

# XXC-2

MATURITY : Very earlyCULTIVATION SEASON : WinterSHAPE : CylindricalLENGTH : 17 to 18 cm (7 in.)PLANT VIGOR : StrongEXTERNAL COLOR : Orange**Cultivation tips**

- ✓ *Avoid excess of fertilizer during early stage due to continuous growth characteristics during low temperature.*
- ✓ *Suitable for both fresh and process use by controlling sowing density.*

**Strengths & Advantages**✓ *Sweet taste* ✓ *Shiny skin*

# XXC-3

MATURITY : LateCULTIVATION SEASON : Summer / WinterSHAPE : ObtriangularLENGTH : 16 to 17 cm (6.1 to 6.7 in.)PLANT VIGOR : StrongEXTERNAL COLOR : Orange**Cultivation tips**

- ✓ *Avoid excess of fertilizer for all stages.*
- ✓ *Wait to harvest until good maturity stage to achieve its maximum taste quality.*
- ✓ *May need soil covering during root growing stage to avoid green shoulder.*

**Strengths & Advantages**

✓ *Field storage ability* ✓ *Deep color*

## XXC-4

MATURITY : Medium

CULTIVATION SEASON : Winter

SHAPE : Semi Cylindrical

LENGTH : 17 to 18 cm (7 in.)

PLANT VIGOR : Medium

EXTERNAL COLOR : Dark red



**Cultivation tips**

- ✓ *Avoid early harvesting due to slow maturity.*
- ✓ *Sowing at high temperature may cause irregular shoulder shape.*
- ✓ *Requires regular amount of fertilizer from early stage.*

**Strengths & Advantages**

✓ *Late bolting* ✓ *Strong for disease*

## XXC-5

MATURITY : Early

CULTIVATION SEASON : Summer / Winter

SHAPE : Semi Obtriangular

LENGTH : 16 to 17 cm (6.1 to 6.7 in.)

PLANT VIGOR : Medium

EXTERNAL COLOR : Dark Orange



**Cultivation tips**

- ✓ *May need soil covering during early stage to avoid green shoulder.*
- ✓ *Regular amount of fertilizer is suitable.*
- ✓ *Avoid early sowing for summer crop cycle.*

## XXC-6

✓ *Summer / Winter variety*

LENGTH :  
*18- 21 cm*

SHAPE :  
*Cylindrical*

MATURITY :  
*Early*



## XXC-11/12

✓ *Summer / Winter variety*

LENGTH :  
*15- 18 cm*

SHAPE :  
*Chantenay*

MATURITY :  
*Medium*



## XXC-13

✓ *Strong for disease*

LENGTH :  
*17 - 18 cm*

SHAPE :  
*Cylindrical*

MATURITY :  
*Medium*



## XXC-15

✓ *Good uniformaty and high yield*

LENGTH :  
*20 - 22 cm*

SHAPE :  
*Cylindrical*

MATURITY :  
*Early*



**Strengths & Advantages****✓ Good root mass ✓ Strong vigor**

## XXB-1

LEAF COLOR : Green  
CULTIVATION SEASON : Autumn/Winter  
UNIFORMITY Good  
BOLTING : Normal  
PLANT GROWTH : Strong  
ROOT STRENGTH : Strong

**Cultivation tips**

- ✓ Do not push with Nitrogen especially during early stage.
- ✓ Might cause split when excess fertilizer remains at later growing stage.
- ✓ Strong for wet soil condition (Water resistant).

**Strengths & Advantages****✓ Strong leaves ✓ Vigorous**

## XXB-2

LEAF COLOR : Green  
CULTIVATION SEASON : Autumn/Winter  
UNIFORMITY Very Good  
BOLTING : Normal  
PLANT GROWTH : Medium  
ROOT STRENGTH : Medium

**Cultivation tips**

- ✓ Do not push with fertilizer throughout the season.
- ✓ Prepare early soil covering for better plant size..
- ✓ Growth slow down as temperature goes down.

**Strengths & Advantages****✓ Short leaves ✓ Strong fatness**

## XXB-3

LEAF COLOR : Dark Green  
CULTIVATION SEASON : Summer/Autumn  
UNIFORMITY Better  
BOLTING : Normal  
PLANT GROWTH : Medium  
ROOT STRENGTH : Medium to Strong

**Cultivation tips**

- ✓ Prepare early soil covering to reach good plant length.
- ✓ Prevent excess amount of fertilizer for leaf elongation.
- ✓ Might cause plant tiller as leaching toward high temperature.

**Strengths & Advantages**

✓ *Crispy frill* ✓ *Late bolting*

## XXL-5

LEAF COLOR :	<u>Dark Green</u>
EARLINESS :	<u>Late</u>
BOLTING :	<u>Strong</u>
HEAT TORELANCE :	<u>Strong</u>
COLD TORELANCE :	<u>Strong</u>
TIPBURN :	<u>Strong</u>



**Cultivation tips**

- ✓ *Suitable for both soil and hydroponics cultivation.*
- ✓ *Widening planting space for warm season cultivation.*
- ✓ *Using plastic tunnel or sheet cover during low temperature.*

**Strengths & Advantages**

✓ *Dark cherry red* ✓ *Thick leaves*

## XXL-6

LEAF COLOR :	<u>Cherry red</u>
EARLINESS :	<u>Late</u>
BOLTING :	<u>Strong</u>
HEAT TORELANCE :	<u>Strong</u>
COLD TORELANCE :	<u>Strong</u>
TIPBURN :	<u>Strong</u>



**Cultivation tips**

- ✓ *Suitable for both soil and hydroponics cultivation.*
- ✓ *May have pale red color during warm season.*
- ✓ *Takes a couple days longer growing period compare with Handsome Green.*

**Strengths & Advantages**

✓ *Good uniformity* ✓ *Field storage*

## XXL-9

LEAF COLOR :	<u>Dark green</u>
EARLINESS :	<u>Late</u>
BOLTING :	<u>Strong</u>
HEAT TORELANCE :	<u>Strong</u>
COLD TORELANCE :	<u>Moderate</u>
TIPBURN :	<u>Strong</u>



**Cultivation tips**

- ✓ *Growing at high temperature may cause bolting and curve vein.*
- ✓ *Harvest at right growing stage for better eating quality.*

**Strengths & Advantages****✓ Strong for volting**   **✓ Dark green**

# XXL-4

LEAF COLOR : Dark greenEARLINESS : EarlyBOLTING : Very StrongHEAT TORELANCE : StrongCOLD TORELANCE : ModerateTIPBURN : Weak**Cultivation tips***✓ Harvest at right growing stage to prevent tipburn.**✓ Suitable for warm growing period.***Strengths & Advantages****✓ Good volume**   **✓ Strong leaves**

# XXL-11

LEAF COLOR : Dark greenEARLINESS : EarlyBOLTING : StrongHEAT TORELANCE : StrongCOLD TORELANCE : ModerateTIPBURN : Weak**Cultivation tips***✓ May start heading during dry or low temperature.**✓ Not suitable for hydroponics.**✓ Harvest at right growing stage to prevent tipburn.***Strengths & Advantages****✓ Good volume**   **✓ Strong leaves**

# XXL-12

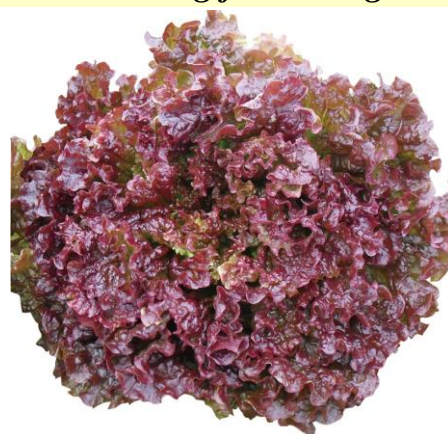
LEAF COLOR : Cherry redEARLINESS : EarlyBOLTING : StrongHEAT TORELANCE : StrongCOLD TORELANCE : ModerateTIPBURN : Moderate**Cultivation tips***✓ May start heading during dry or low temperature.**✓ Not suitable for hydroponics.**✓ Harvest at right growing stage to prevent tipburn.*

### Strengths & Advantages

✓ *Dark cherry red* ✓ *Strong for volting*

## XXL-8

LEAF COLOR :	<u><i>Dark cherry red</i></u>
EARLINESS :	<u><i>Early</i></u>
BOLTING :	<u><i>Moderate</i></u>
HEAT TORELANCE :	<u><i>Strong</i></u>
COLD TORELANCE :	<u><i>Moderate</i></u>
TIPBURN :	<u><i>Moderate</i></u>



### Cultivation tips

- ✓ *Harvest at right growing stage due to fast growing speed compare to other red leaf varieties.*
- ✓ *Suitable for warm growing period with good dark red color.*

### Strengths & Advantages

✓ *Strong for volting* ✓ *Good taste*

## XXL-1

LEAF COLOR :	<u><i>Dark green</i></u>
EARLINESS :	<u><i>Early</i></u>
BOLTING :	<u><i>Very Strong</i></u>
HEAT TORELANCE :	<u><i>Strong</i></u>
COLD TORELANCE :	<u><i>Moderate</i></u>
TIPBURN :	<u><i>Strong</i></u>



### Cultivation tips

- ✓ *Achieve good heading size with minimizing amount of fertilizer.*
- ✓ *Suitable for warm growing period.*
- ✓ *Avoid high moisture soil growing.*



**Strengths & Advantages**✓ *Good size fruit* ✓ *Good shelf life*

## XXM-29(Spring)

FRESH COLOR : Salmon orangeBRIX : 15 to 16 %MATURITY : 55 to 60 daysFRUIT SHAPE : RoundRIND COLOR Pale greenVIGOR : Strong**Cultivation tips**

- ✓ *Keep soil temperature above 17 °C(63 °F) during transplanting.*
- ✓ *Target fruits setting above 12th node at temperature above 15 °C(59 °F).*
- ✓ *Increase plant spacing as it tend to remain high moisture inside tunnel(Greenhouse).*

**Strengths & Advantages**✓ *Good netting* ✓ *Good shelf life*

## XXM-21(Early Summer)

FRESH COLOR : Salmon orangeBRIX : 15 to 16 %MATURITY : 55 to 58 daysFRUIT SHAPE : RoundRIND COLOR Light greenVIGOR : Strong**Cultivation tips**

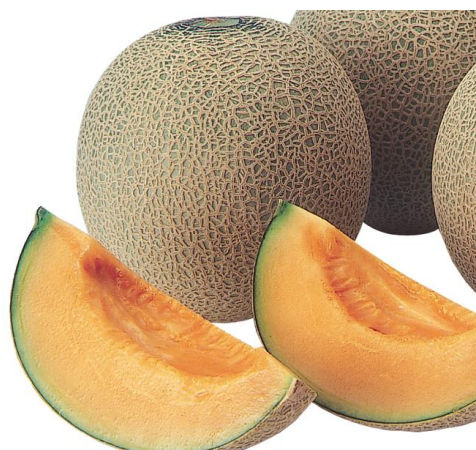
- ✓ *Keep soil temperature above 17 °C(63 °F) during transplanting.*
- ✓ *Target fruits setting above 12th node at temperature above 15 °C(59 °F).*
- ✓ *Control good ventilated condition and avoid excess number of fruits setting.*

**Strengths & Advantages**✓ *Good taste* ✓ *Good shelflife*

## XXM-12(Summer)

FRESH COLOR : Salmon orangeBRIX : 15 to 16 %MATURITY : 53 to 55 daysFRUIT SHAPE : RoundRIND COLOR Pale greenVIGOR : Medium to Strong**Cultivation tips**

- ✓ *Keep soil temperature above 17 °C(63 °F) during transplanting.*
- ✓ *Target fruits setting above 12th node at temperature above 15 °C(59 °F).*
- ✓ *Apply fungicide on the fruits 25 to 30 days after pollination.*



**Strengths & Advantages****✓ Disease tolerance ✓ Good netting****XXM-7**

FRESH COLOR : Yellowish green  
 BRIX : >14%  
 HEAT TOLERANCE : Medium  
 FRUIT SHAPE : Round to oblate  
 RIND COLOR White  
 VIGOR : Medium



HR:Fom0,2 / MNSV

**Cultivation tips**

- ✓ Keep soil temperature above 17 °C (63 °F) during transplanting.
- ✓ Target fruits setting above 12th node at temperature above 15 °C (59 °F).
- ✓ Increase plant spacing as it tend to remain high moisture inside tunnel(Greenhouse).

**Strengths & Advantages****✓ Good netting ✓ Good shelf life****XXM-27**

FRESH COLOR : Yellowish green  
 BRIX : >15%  
 HEAT TOLERANCE : Medium  
 FRUIT SHAPE : Round  
 RIND COLOR Light gray  
 VIGOR : Medium



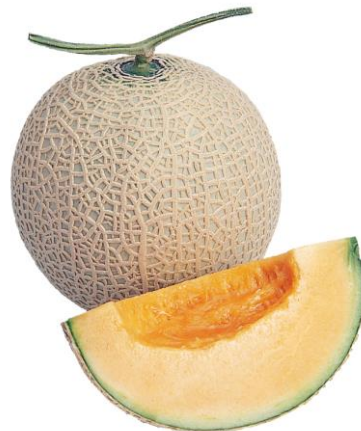
HR:Fom0,2

**Cultivation tips**

- ✓ Keep soil temperature above 17 °C (63 °F) during transplanting.
- ✓ Target fruits setting above 15th node at temperature above 15 °C (59 °F).
- ✓ Cover the fruits 35 days after pollination to avoid sunburn.

**Strengths & Advantages****✓ Good taste ✓ Good shelflife****XXM-28**

FRESH COLOR : Salmon orange  
 BRIX : >15%  
 HEAT TOLERANCE : Medium  
 FRUIT SHAPE : Round  
 RIND COLOR Light gray  
 VIGOR : Medium



HR:Fom0,2

**Cultivation tips**

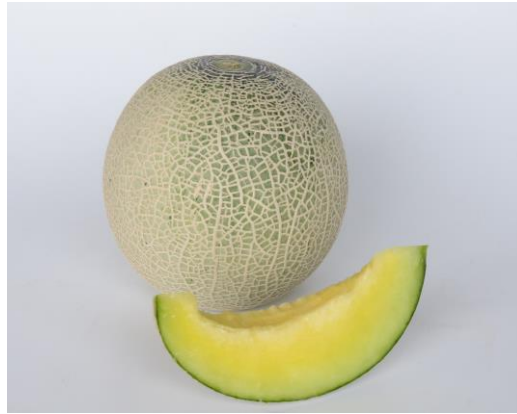
- ✓ Keep soil temperature above 17 °C (63 °F) during transplanting.
- ✓ Target fruits setting above 15th node at temperature above 15 °C (59 °F).
- ✓ Cover the fruits 35 days after pollination to avoid sunburn.

# XXM-1

FRESH COLOR : Yellowish green

RIND COLOR Light green

VIGOR : Medium



# XXM-2

FRESH COLOR : Salmon orange

RIND COLOR Light green

VIGOR : Medium



# SWEET PEPPER

XXCA-2

XXCA-1

XXCA-3

XXCA-9





夢を植える。未来を育む。 *Well future together*

 **横浜植木株式会社**  
UEKI The Yokohama Nursery Co.,Ltd.